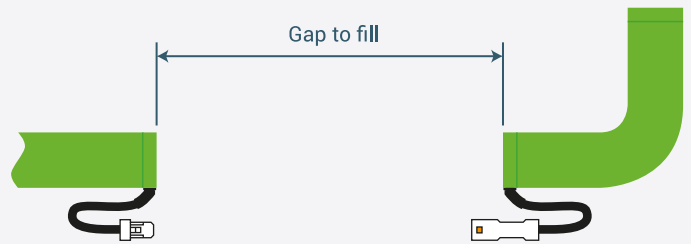
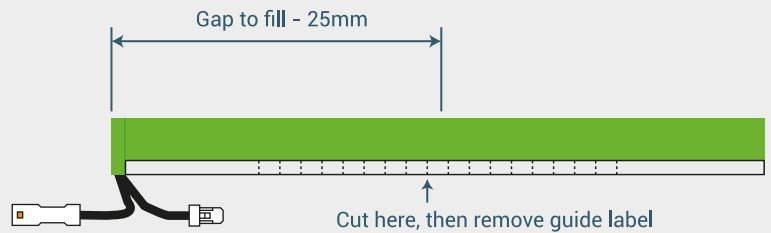


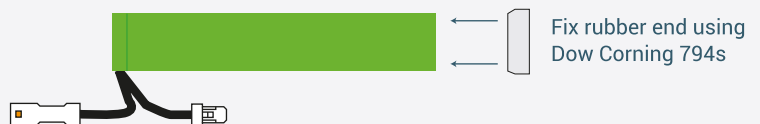
- A**
- Measure the gap which the section must fill.



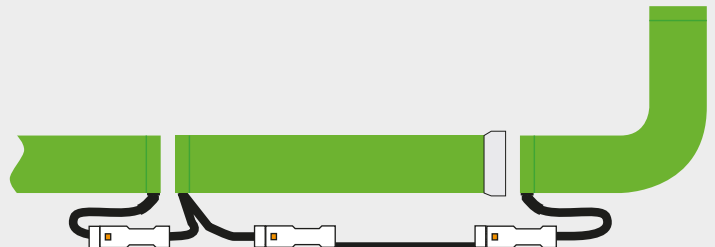
- B**
- Subtract 25mm from this gap measurement.
 - Cut the adjustable section at the mark which is closest to this value, but less than it.
 - Remove the cutting guide label after the cut has been made.



- C**
- Fix the rubber endcap using Dow Corning 794s.
 - Check for a good seal.



- D**
- Lay the section to one side for at least one hour, then fit in position.
 - Loop any excess cable neatly out of the way.



IMPORTANT

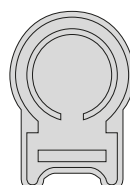
The cutting, sealing and fixing of the adjustable section must only be completed by operatives who have completed a Visive training program.

Only cut the adjustable section in the locations marked by a dotted line. Cuts outside of these areas will render the section inoperable.

The operations detailed above should be carried out in a clean, dry environment. Moisture must not be allowed to come into contact with the inside of the tube.

Some parts inside the adjustable section are susceptible to damage from static electricity. Avoid performing the adjustment in areas where static charge may accumulate, for example on carpet. A concrete floor is a suitable location. Touch an earthed metal surface to discharge any static buildup immediately prior to making the adjustment.

When fitting the rubber endcap, check that the Dow Corning sealant forms a continuous bead between tube and endcap. Add more sealant if necessary. In bad weather, leave the sealant to dry for as long as possible - preferably overnight.



Apply Dow Corning 794s here